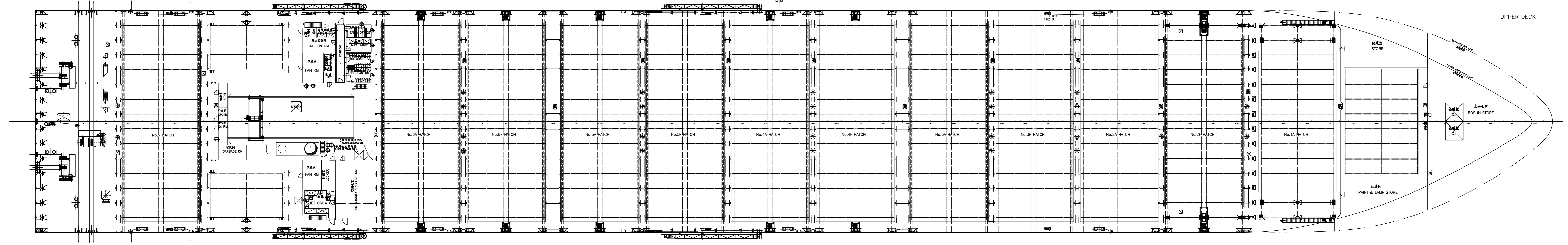
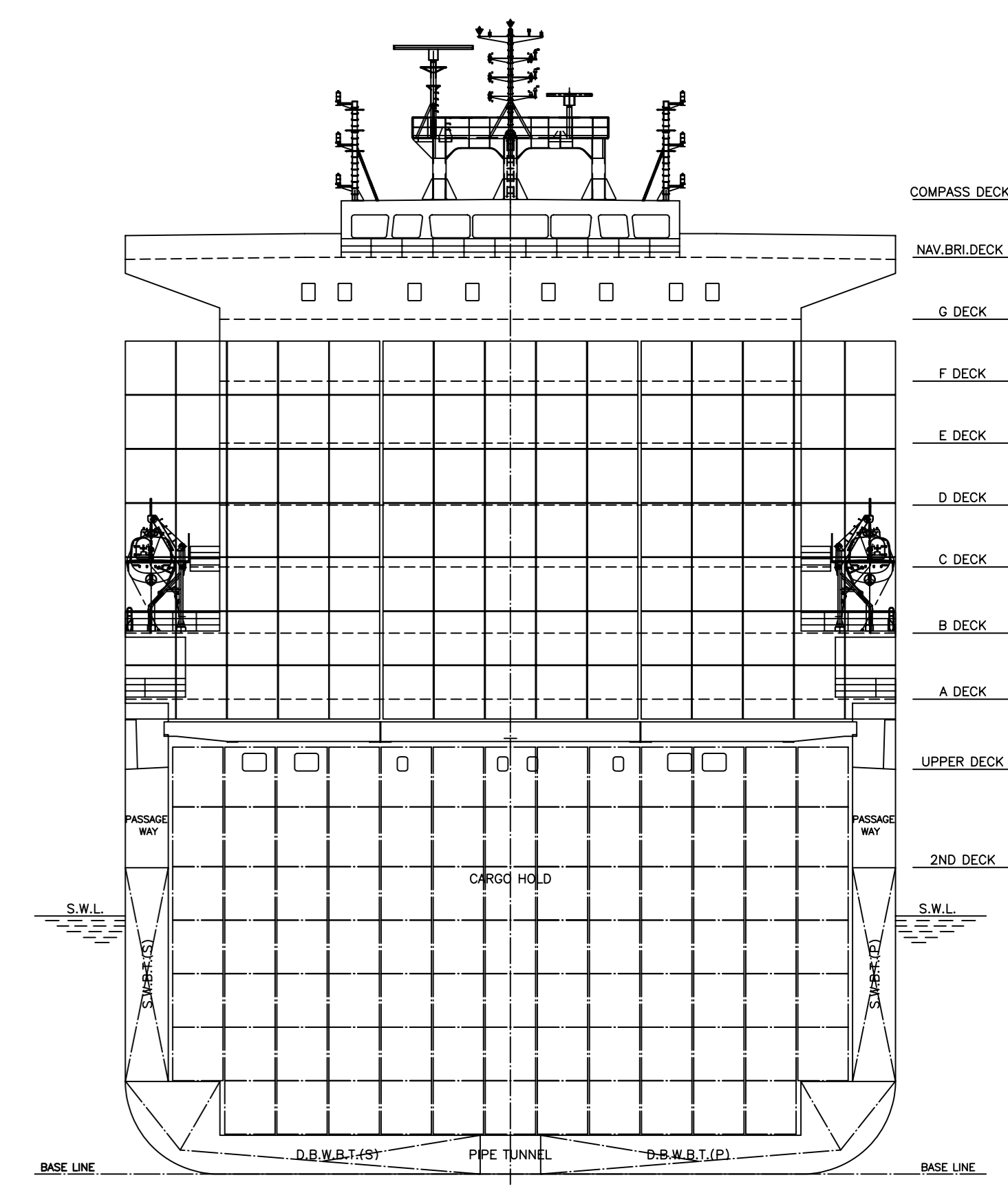
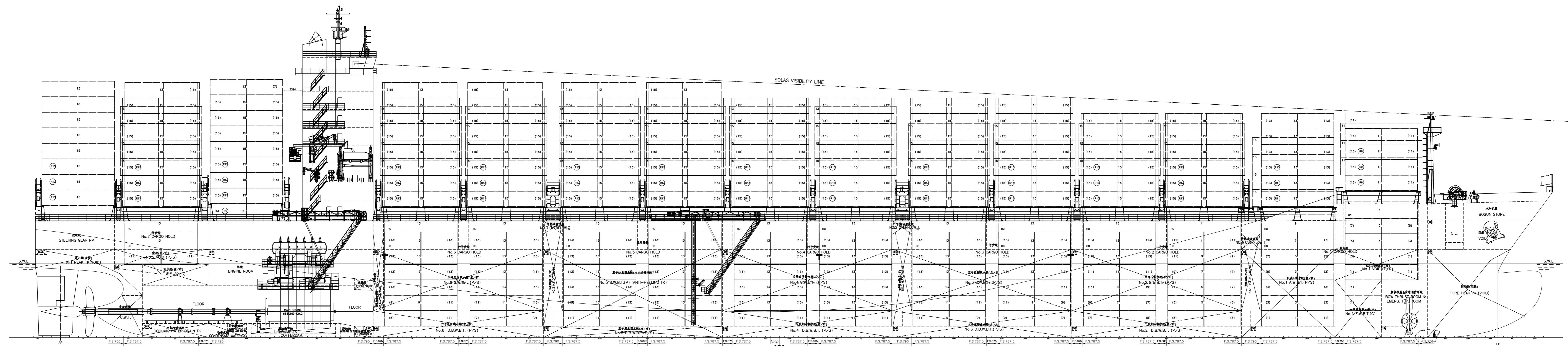
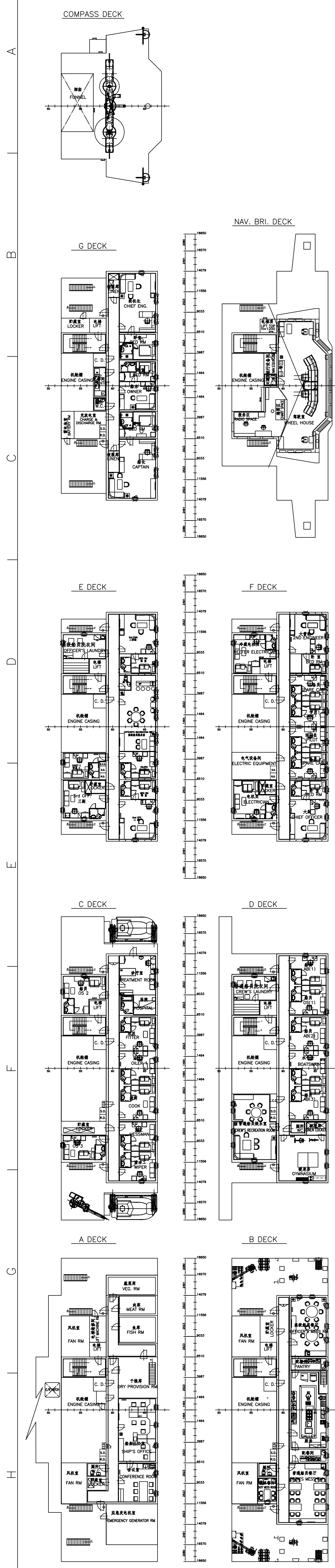


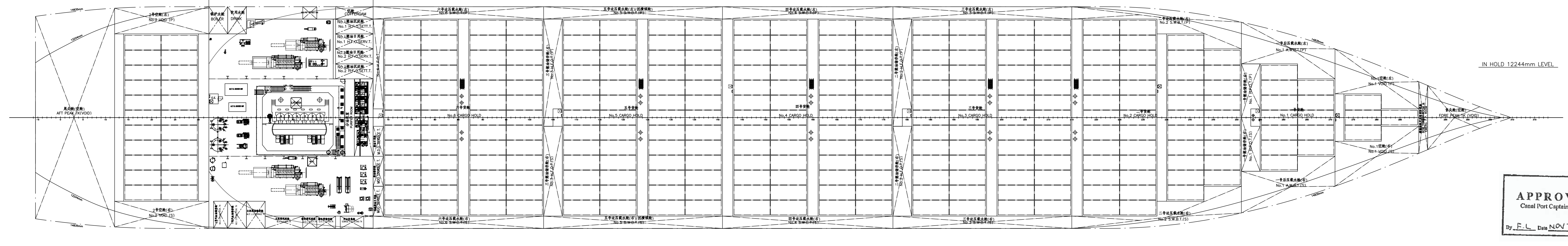
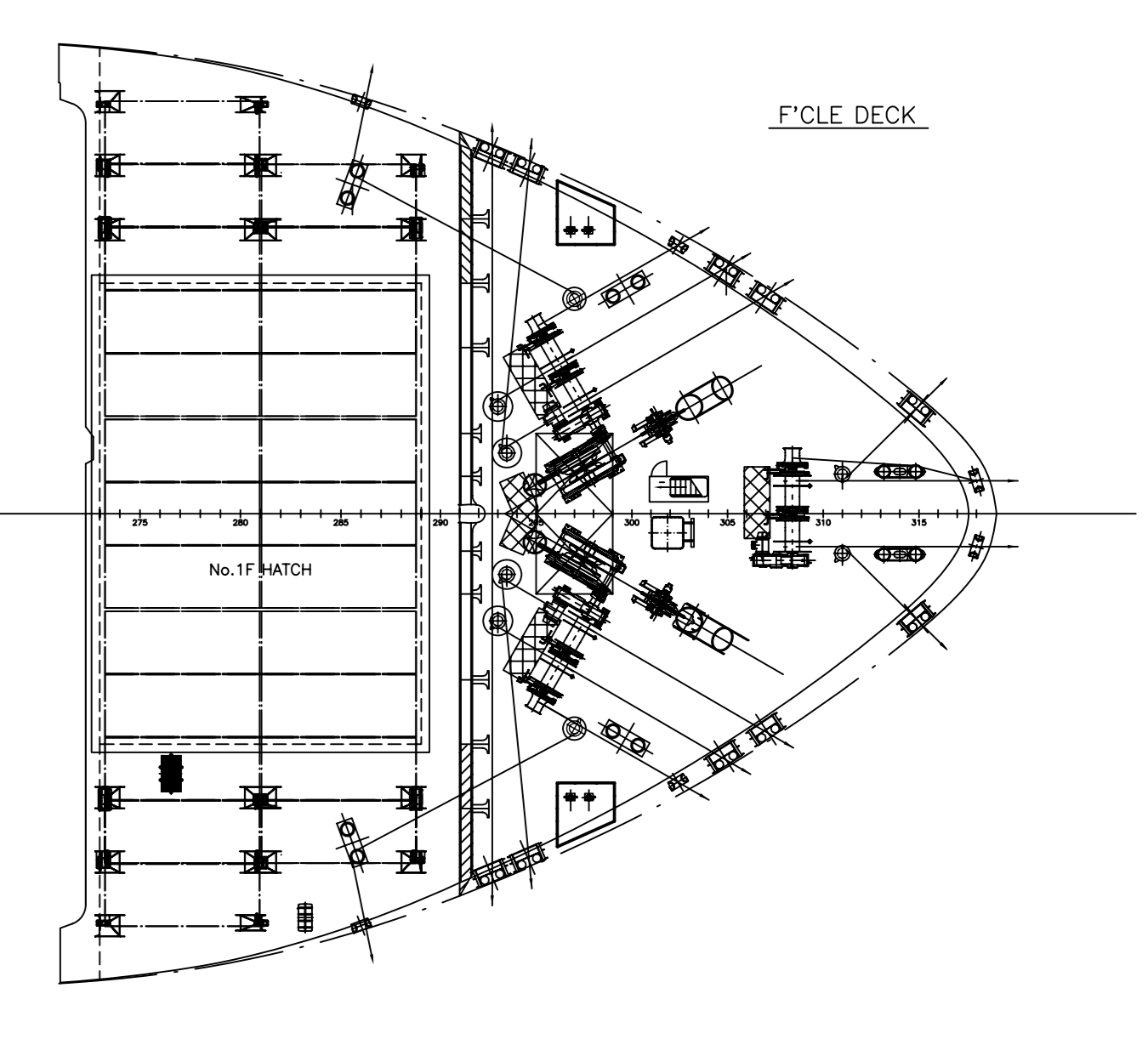
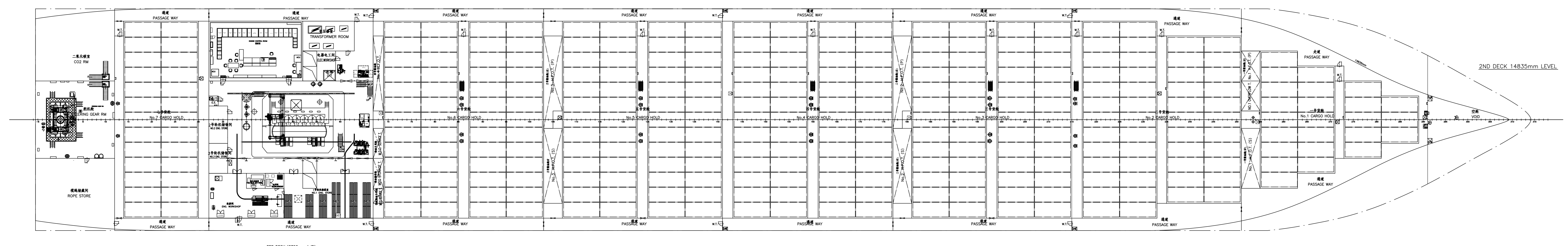
58	54	50	46	42	38	34	30	26	22	18	14	10	06	02	40' BAY	TOTAL NUMBER											
-	55	53	47	45	43	41	39	37	35	33	31	29	27	25	23		21	19	17	15	13	11	09	07	05	03	01

DATE	REV.	DESCRIPTION	版本说明	DATE	REV.	DESCRIPTION	版本说明
日期	版本	描述	说明	日期	版本	描述	说明



**PRINCIPAL PARTICULARS**

LENGTH(O. A)	abt.255.40 m
LENGTH(B. P)	242.00 m
BREADTH(MLD.)	37.30 m
DEPTH(MLD.)	19.60 m
CONTAINER CAPACITY (TOTAL)	4957 TEU
ON DECK	3131 TEU
IN HOLD	1826 TEU
MAIN ENGINE	6S80ME-C9.2
M.C.R.	27060 KW x 78.0 RPM
C.S.R.	24354 KW x 75.3 RPM
CLASSIFICATION	CL
+100A5, Container Ship, DG, IW, NAV-0, RSD,	
+MC, AUT, EP, BWM	



**APPROVED**  
 Canal Port Captain, Pacific  
 2014.11.13

BUILDER	JIANGSU NEW YANGZIJIANG SHIPBUILDING CO., LTD.	SHIP'S No.	
DESIGNER	MARINE DESIGN & RESEARCH INSTITUTE OF CHINA	DESIGNER	
DESIGN TITLE	4800TEU CONTAINER SHIP	DESIGN TYPE	DETAILED DESIGN
PROJECT No.	M30202B-100-002F	SCALE	1:250
DATE	NOV 13, 2014	PAGE	1/1

